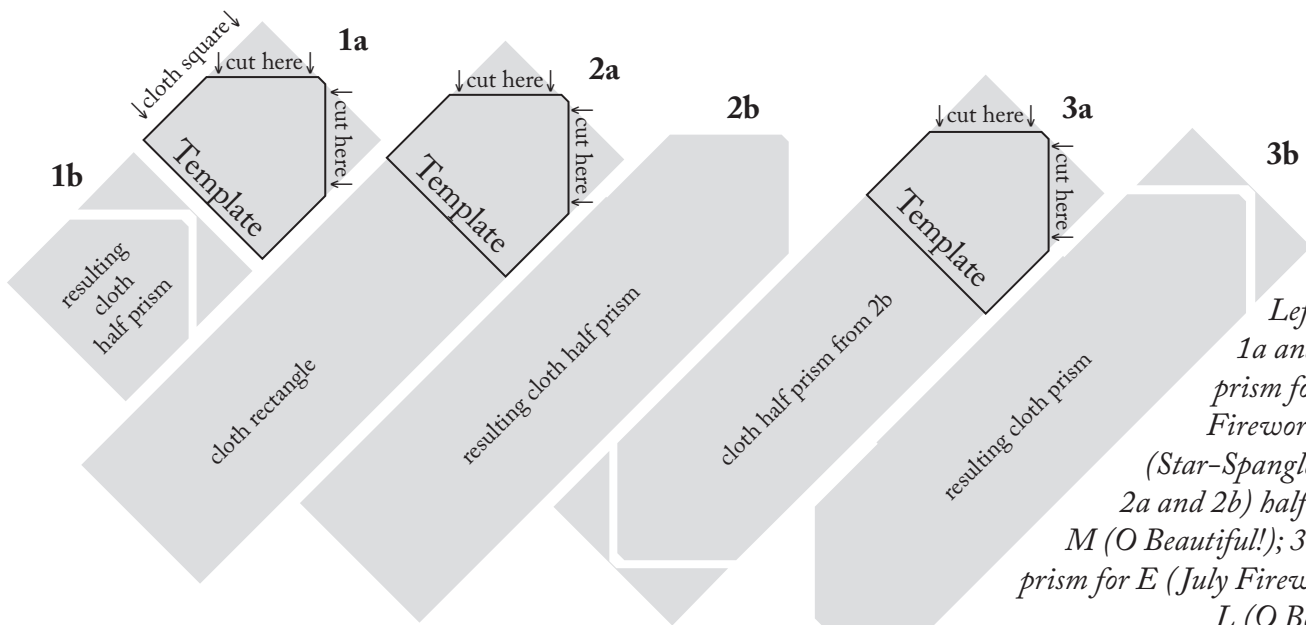
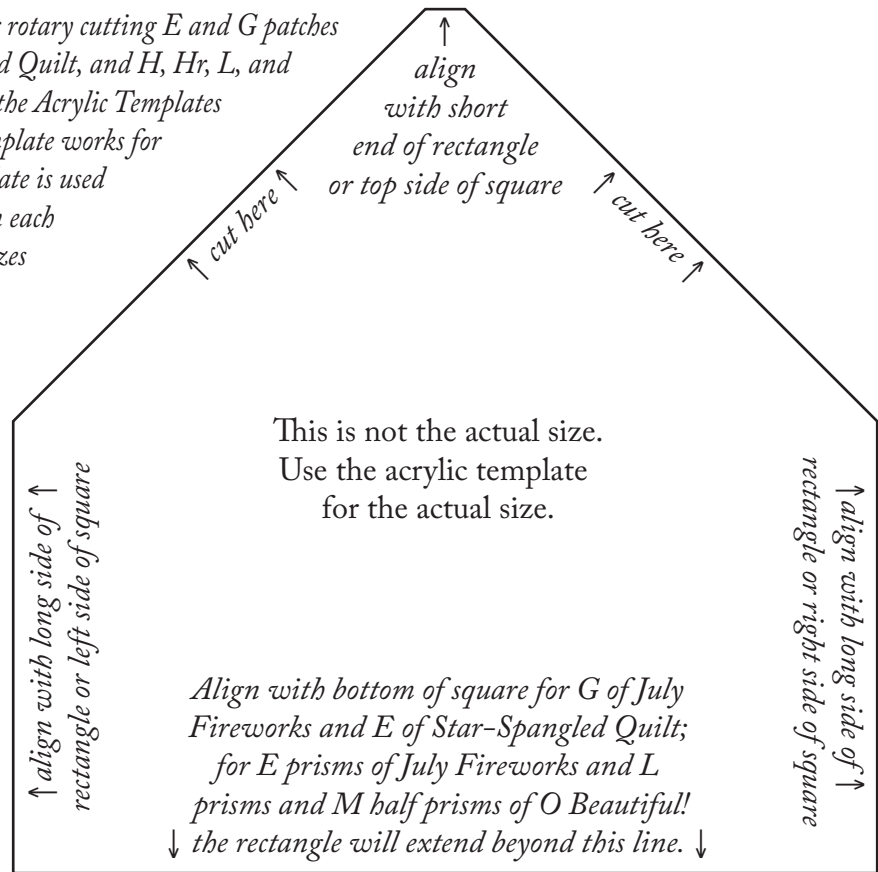


Using Acrylic Templates to Rotary Cut Prisms & Half Prisms for July Fireworks, Star-Spangled Quilt, and O Beautiful!

You can purchase acrylic templates for rotary cutting E and G patches of July Fireworks, E of Star-Spangled Quilt, and H, Hr, L, and M of O Beautiful! using the links in the Acrylic Templates page at judymartin.com. A single template works for both H and Hr. Another single template is used for both the prisms and half prisms in each pattern. The house-shaped template sizes vary from one quilt to another.

For all prisms and half prisms, start by cutting a square or rectangle of the size listed in the yardage and cutting box. For each prism or half prism, align the 2 parallel sides of the template with the long sides of the fabric rectangle or the right and left sides of the fabric square. Also align the blunt tip at the angled end of the template with the top of the fabric square or short side of the rectangle. For half prisms G of July Fireworks and E of Star-Spangled Quilt, also align the bottom of the template with the bottom of the fabric square.

Cut along the angled edges of the template to complete half prisms (July Fireworks), E (Star-Spangled Quilt), or M (O Beautiful!). Repeat at the opposite end of the rectangle to complete prisms E (July Fireworks) or L (O Beautiful!).



Left to right:
 1a and 1b) half prism for G (July Fireworks) and E (Star-Spangled Quilt);
 2a and 2b) half prism for M (O Beautiful!); 3a and 3b) prism for E (July Fireworks) and L (O Beautiful!).